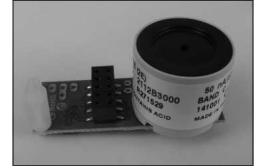
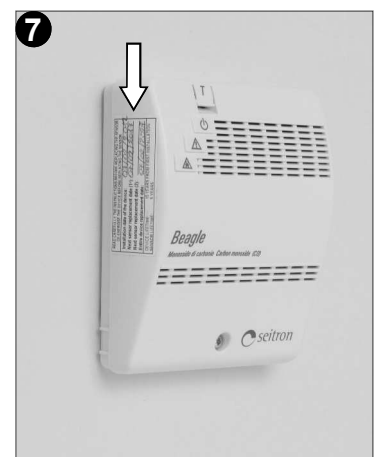
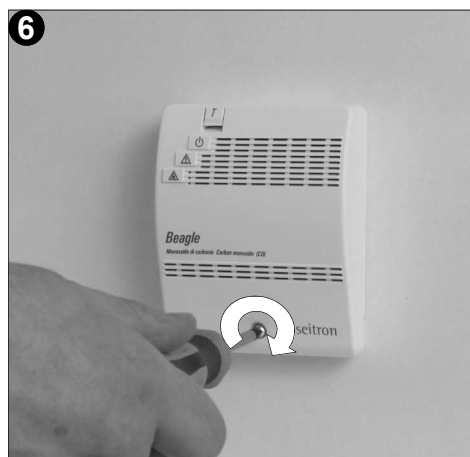
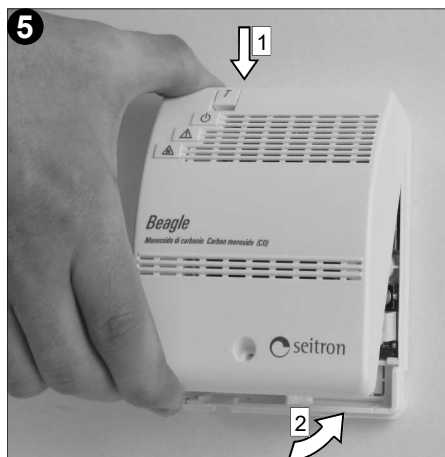
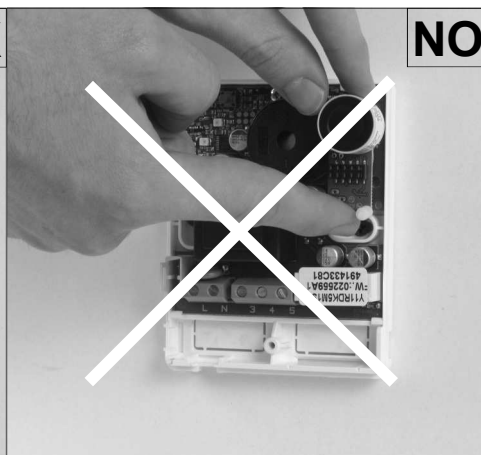
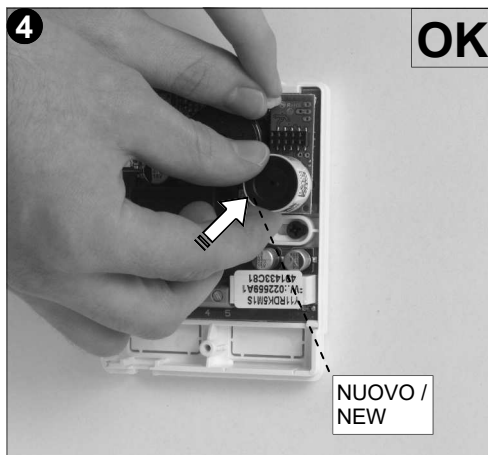
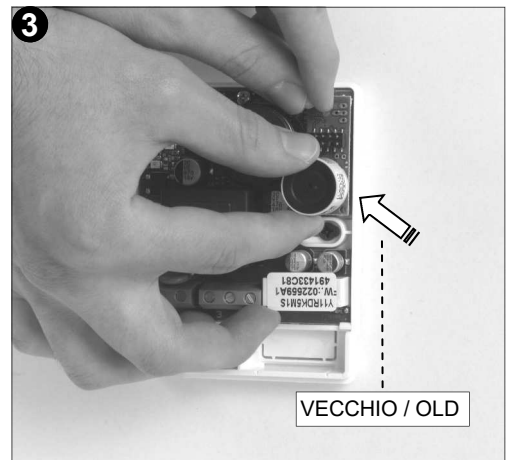
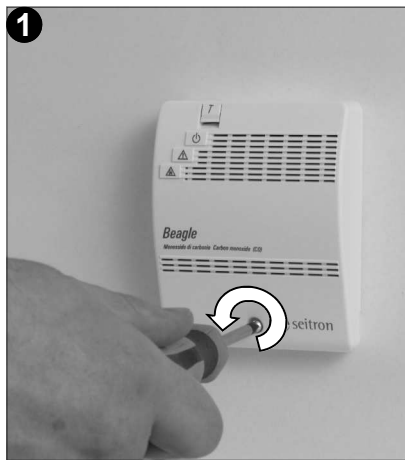


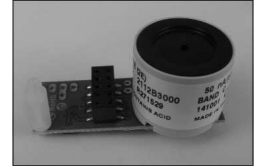
# AC MC01: CO



- La sostituzione del sensore deve essere eseguita da personale qualificato.
- Prima di effettuare la sostituzione scollegare l'alimentazione dall'apparecchio.
- The replacement of the sensor must be performed by qualified technicians.
- Before performing the replacement unplug the mains power from the device.



# AC MC01: CO



- La sostituzione del sensore deve essere eseguita da personale qualificato.
- Prima di effettuare la sostituzione scollegare l'alimentazione dall'apparecchio.
- *The replacement of the sensor must be performed by qualified technicians.*
- *Before performing the replacement unplug the mains power from the device.*

